



**Transforming Lives,
Transforming Times**

Annual Report

July 1, 2015 – June 30, 2016



**Committed to developing
person-centered, quality living
experiences for individuals with
disabilities**

The Phoenix Residence, Inc.

330 Marie Ave E, West St. Paul, MN 55118 ~ 651-227-7655

www.phoenixresidence.org

Message from President

Life Without Our Prince

Minnesota without its Prince is a real transformation for Minnesotans! We were shocked at the announcement of Prince's death April 21, 2016. Prince helped us connect with one another crossing generational, gender, race, and other distinctions people use to call out differences. He was and will be a large part of the fabric of Minnesota's DNA; *it's hard to imagine life without our Prince*. In thinking about the transformation in the disability services delivery system we are experiencing here in Minnesota, I can not help but think of Prince's song "Let's Work".



As we work to transform lives through the implementation of Minnesota's Olmstead Plan to ensure our services are truly person-centered, we understand that transformation must happen in our thinking and in how we operate to provide individualized services. We are more optimistic than ever that service innovations create opportunities for people to experience life through enhanced residential and employment options and greater community access.

In 2015, we have expanded our efforts to assisting individuals to live in their own homes and have helped people find or maintain employment in communities where they live. We have partnered with our sister corporation Phoenix Service Corporation in providing non-residential services and supports. The Phoenix Residence will continue to grow and adapt as things change, but our commitment to developing person-centered living experiences will never change. Here is one story of how Phoenix and the services we provide have helped transform a person's life . . .

Brian's Story

Brian was diagnosed with a seizure disorder when he was a small child. After his father passed away and his mother began living in a nursing facility, Brian remained living at home. After a few months, Brian began to receive services through the Community Access for Disability Inclusion (CADI) waiver.

Brian and his team explored alternative housing options because paying rent, groceries, and utilities were stressing Brian's meager monthly income through social security. Brian was very unhappy when he heard that he may have to move.

Brian's team, through the use of technology and tailoring services around his needs found a way for him to remain in his family home. They installed sensors in his home that alerted a call-in agency if Brian were to have a seizure, fall, or sustain an injury. They began a service helping Brian go grocery shopping, make weekly trips to his favorite neighborhood restaurant, manage his budget, and provide housekeeping and 24-hour emergency support. The CADI waiver provided funding for some services helping Brian to live independently.

His service providers have developed a relationship with Brian's neighbors who have known him since he was a child and want him to be successful. His team is dedicated to helping Brian live a life of independence and choice.

Without these supports, Brian would have had to move away from his home and his familiar neighborhood. He would have to tap into the already stressed subsidized housing market or utilize group living services. Brian's story is just one of many creative ways Phoenix is helping individuals to live independently.

Sincerely,

Darlene Scott

CEO/President of The Phoenix Residence, Inc.



Legislative News

Introducing Best Life Alliance

The Best Life Alliance, formally The 5% Campaign, is a nonpartisan coalition of Minnesota service providers, caregivers, self-advocates, family members, and community partners advocating for Home & Community-Based Services with the Minnesota state legislature (HCBS). This name change was introduced in December of 2015. It is part of a state-wide movement toward fully person-centered and community-integrated services for people with disabilities.

The original alliance was formed in 2014 and maintains life in the community is the first and best option for people with disabilities, as well as their families, workers, and our state as a whole. The Best Life Alliance supports reform and a much needed rate increase for community-based services in 2016 to address the current workforce crisis. Currently, The Phoenix Residence along with providers across the state are experiencing a shortage of people to work in our field. This shortage has been detrimental to our organization and most importantly, those we serve. A rate increase will ensure better compensation for our direct care staff and attract qualified people.

Chief authors of the bill were Senator Kent Eken and Representative Rod Hamilton. We encourage you to contact your elected officials and ask them to support the Best Life Alliance and a rate increase for HCBS—to find out who represents you, go to leg.state.mn.us/leg/districtfinder and click on the *Who Represents Me* link.

Disappointing End to Legislative Session

After just ten short weeks, the 2016 legislative session ended at midnight on Sunday, May 22. Unfortunately, a rate increase for Home & Community-Based Services (HCBS) was not included in the final budget agreement between legislators and Governor Dayton. However, we are proud of our hard work this session and we did everything we could to help pass a rate increase this year.

In the second year of the biennium, the bonding year, supplemental spending was very limited. There were many competing priorities for legislators in 2016, and with little opportunity for spending, the significant costs of a 5% rate increase for HCBS (both this year and in future years) increased our challenge.

While we are disappointed with this session's result, we know progress at the Capitol often takes years of persistent work as a community. We passed a 5% rate increase in 2014, and will not let the bad news this year stop us from future success.

Leaders and committee members within the Best Life Alliance will begin meeting right away this summer to develop new strategies and legislation for the 2017 session. With the upcoming election in both the Senate and House this November, we know there will be many new legislators next year. As information about next years' plan is unveiled, The Phoenix Residence will keep you updated.

The Phoenix Residence participated in ARRM Day at the Capitol on March 15. The day includes a rally followed by meetings with legislators.



Company News

Focus on Health and Wellness

At the start of 2016, The Phoenix Residence officially launched our Health and Wellness initiative. Each month, employees receive a newsletter full of healthy eating tips, weight-loss ideas, and other important health related topics.

To kick off the wellness program, all employees received a water bottle as we “Hydrate for Health”. Everyone is aware of the health benefits of drinking more water. The Phoenix Residence also launched a Biggest Loser Challenge in January 2016 – houses created teams and who ever loses the highest percentage of weight, will have the rights to a traveling trophy for the entire year. As a group, we collectively lost 27 pounds. Each quarter a new challenge will be announced.

Health and Wellness is not just an employee focus, it's our entire organization. As a goal, we would like to expand our program to include everyone, including those we serve. Such as movement challenges, recipe exchanges, lunch and learn sessions, etc. For more information, contact the Central Office at 651-227-7655.

Hatha Yoga

The Phoenix Residence along with a partnership with the University of Minnesota's Center for Spirituality and Healing offered Hatha Yoga classes to our staff. Hatha Yoga is a gentle introduction to the basic yoga postures and breathing techniques.

Our organization is a Community Partner at the U of M where students participate in Service Learning opportunities while gaining real-world work experience. This 5-week series is part of our wellness initiative. As an organization, we will continue to grow and develop our partnerships and continue to offer other opportunities to our staff and those we serve.

Even in this short time, we agree we gained flexibility and strength, while calming our minds! A big thank you to Paul Kinkade, a student from the U of M studying to be a yoga instructor who lead the class.

Phoenix employees and individuals from Caswell House enjoying the water bottles as we kick off the Health and Wellness Initiative.



Hatha yoga instructed by U of M student at the Central Office .

Employee News

Phoenix Residence would like to congratulate Jon Colby from Douglas House for Outstanding Leader and Gwen Spencer as Employee of the Year. Thank you for your years of service and dedication to our organization!

Employee of the Year ~ Gwen Spencer

Quote from the nomination:

"Gwen is very welcoming to everyone who walks through our doors. She keeps the house in beautiful shape, no matter what the day throws her way. She constantly keeps top-of-mind what is the most important part of our job; the quality of life for our individuals. She has a calm, level-headed way about her and how she gets her duties done. She is one of the most pleasant people I have ever met and look forward to working with her for a long time. Thank you Gwen!"



2015 Outstanding Leader ~ Jon Colby

Quote from the nomination:

"Jon Colby has been a manager for many years with The Phoenix Residence. He has lived his life alongside the individuals he has been caring for throughout his and their lives. He often will tell you I have learned so much from them and they have learned from me. Over the years, Jon has been Santa Claus, an athletic coach, a friend, banker, personal assistant, grievance counselor, barber, and most importantly, considered one of the family. I often hear family members express such gratitude for Jon. Jon's word is simple; do unto others how you would like to be treated with fairness, kindness, and with a smile"



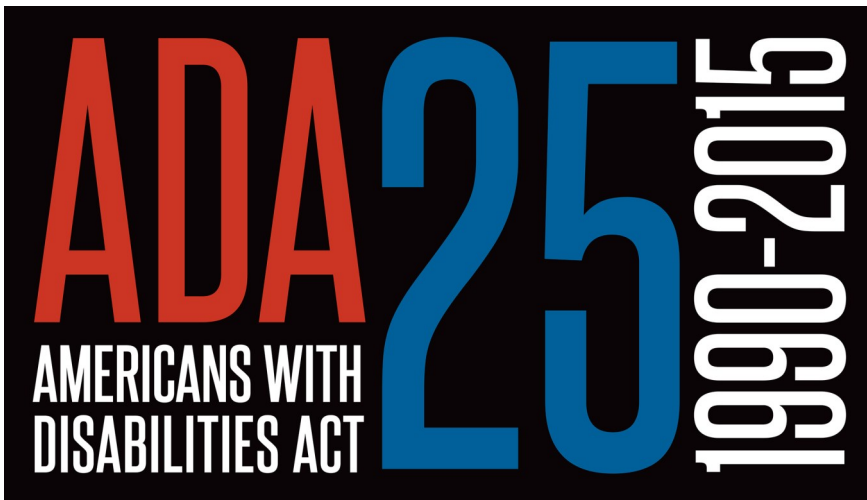
Happy 25th Anniversary ADA!

Over the last year The Phoenix Residence and other disability providers recognized the 25th anniversary of the American's with Disabilities Act (ADA). This piece of legislation, originally signed into law on July 26th of 1990, is the most comprehensive step made in providing equal access to our public spaces for people with disabilities. The ADA outlines the expectation all people should have the same opportunity to participate in mainstream American life. This includes employment opportunities, access to public spaces, and the ability to participate in state and local programs.

As a result, we as a society have taken great steps in making ourselves more accessible. Programs and services have been developed which are specifically geared toward supporting people in accessing their community or getting the devices they need to do so. In 25 years, a great amount has been done to adhere to the vision and expectation outlined in the ADA.

However, we are not complete in this endeavor. While great progress has been made, varying degrees of compliance exist and we must continue to advocate where necessary to ensure people with disabilities are being provided the access they not only need but are entitled to. Additionally, as our society changes, such as the introduction of social media and technology, new conversations must be had in how we make our world accessible to all people.

It truly has been a landmark piece of legislation protecting the civil rights of people with disabilities and challenging us as a society to grow and do better!



President George Bush signs the Americans with Disabilities Act into law on July 26, 1990 at the White House.



Top Workplace

Phoenix Residence is Recognized as Top Workplace in Minnesota by Star Tribune

The Phoenix Residence is happy to announce it has been selected as one of Top Workplaces in Minnesota by the Star Tribune! This year, 150 organizations throughout Minnesota have been honored with this recognition. The Top Workplaces are determined solely on employee feedback gathered from our employees during an online survey.

"We are thrilled and honored to receive this recognition," stated Darlene Scott, the CEO/President of The Phoenix Residence. "Phoenix impacts the lives of people! There is no greater reward than knowing you are making a difference in the lives of others. The work we do at Phoenix supporting individuals with disabilities to live full and productive lives gives meaning and purpose to the lives of our employees. The longevity of many Phoenix employees is a testament of their dedication to serve."

The Star Tribune also awards three organizations who are outstanding in the categories of Leadership, Meaningfulness, and Communication; The Phoenix Residence was honored to receive the "Meaningfulness Award". This prestigious award means employees "agreed" more strongly than those at other companies with the statement "My job makes me feel like I am part of something meaningful." A video was created to commence this achievement featuring staff and individuals served by Phoenix Residence.

Thank you all for making The Phoenix Residence a great place to work!!



Fundraising and Grants

Shop 'til you Drop and Support The Phoenix Residence

Did you know you can support The Phoenix Residence just by shopping? Do all of your shopping online on Amazon.com and we will receive a portion of your sales. And the best part, you don't have to leave your home and face the crazy crowds. Operated by Amazon.com, AmazonSmile will donate .5% of your purchases to our organization. We have been participating in the AmazonSmile program for the past year and have received several donations. The funds we receive will be used in our general funds.

To make sure your purchases support The Phoenix Residence, follow these easy steps:

1. Go to smile.amazon.com - bookmark this site and use it when you shop on Amazon
2. You will be asked to log-in or create an account
3. Type **Phoenix Residence** in the box and click submit
4. A list of organizations will appear – click on Phoenix Residence (Amazon will remember your selection, so you only have to do this once)
5. A message will appear that you are now supporting Phoenix Residence
6. Shop, make purchases, etc. – just like normal!

Once you make a purchase, you will receive a message at the top of the screen and Phoenix will receive a portion of your purchase. If you have any questions, please contact Rachel Koenigs at 651-294-7964.



The Phoenix Residence Receives Hubbard Broadcasting Foundation Grant

The Phoenix Residence received a grant this past January from the Hubbard Broadcasting Foundation. The funds received will be used for the continuation of music therapy at the English, Janet Court, and Centerville Houses.

Music therapy is a service enjoyed by individuals but not funded through operating budgets. The community sites which offer music therapy typically fund it from money raised from fundraisers like Made in the Shade and Gertens Spring Bedding Plant sale.

Music therapy has many benefits to a wide range of individuals; specifically adults with physical and developmental disabilities. During a group music therapy session, the music acts as a co-therapist stimulating social interactions between participants, creating rhythm and structure for movement, singing and speech, and stimulating their cognition.

A sincere thank you to Hubbard Broadcasting Foundation for the grant and the ability to continue music therapy!



Russ Douglas Phoenix Golf Classic

Another successful Russ Douglas Phoenix Golf Classic is in the books! The 2016 event was held June 13 at the River Oaks Golf Course in Cottage Grove. Over 85 golfers participated with many volunteers from The Phoenix Residence and 3M Cares helping throughout the day with golf games, registration, and to make sure the event runs smoothly. Thank you to all major sponsors, golfers, those who donated to the silent auction and wall-of-wine, 3M volunteers, family members, and Phoenix Residence staff for all of your support to our wonderful organization! The event raised over \$40,000!

Next years event is schedule for June 12, 2017. Hope to see you on course next year!

We would also like to thank our Russ Douglas Phoenix Golf Classic Major Sponsors

Platinum Level Sponsor

CBS Construction

Gold Level Sponsors

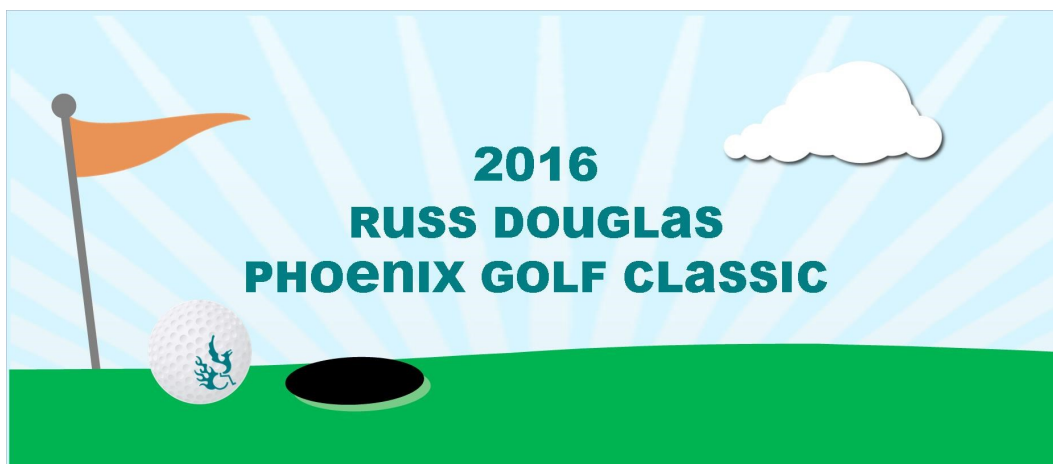
Mary Jo Bailey
Geritom Medical, Inc.
John's ProCare
Lunds & Byerlys
Lynn and Dave Myhr
NFP
Eric and Mary Claire Schultz

Silver Level Sponsors

Anchor Bank, N.A.
Carlson Advisors
Cummings Mobility
John Kuhrmeyer/AXA Advisors

Bronze Level Sponsors

Banks and Company, LLC
CBL Floors
Family of Paul Dwyer
K & L Building and Remodeling Co.
McKesson Medical
Minnesota Coaches, Inc.
Steve and Louise Pfeiffer
Darlene Scott



Made in the Shade

The Phoenix Residence again participated in Made in the Shade 5K Walk, Run, and Roll on September 19 at Lake Calhoun. Over \$12,000 was raised, with 130 walking in support of our organization and their loved one.

The event started with a walk around Lake Calhoun followed by lunch and entertainment by the Moss Piglets. Each house is encouraged to set a goal— here are a few ideas on what houses were fundraising for:

- **English** – Music Therapy
- **Centerville** – Music Therapy
- **Eric's** – Fire Pit
- **Chaparral** – Music Therapy
- **Ludden** – Living Room Furniture
- **Newport** – Trip to Duluth
- **Suburban** – New Stove
- **Viking** – Music Therapy
- **Western** – Patio Furniture
- **Howard** – Living Room Furniture
- **Drexel** - Bench for Memorial Garden

We would also like to thank our Made in the Shade Major Sponsors – Thank You for your continued support!

Cardinal Level—\$500

Certification Services
David and Karen Olson
Family of Paul Dwyer

Bluebird Level—\$250

Patricia Deeney Burns Trust
Becky Butler
Christensen Group Insurance
Thomas and Mary Deeney
John's ProCare
McKesson Medical
Dave and Lynn Myhr
Steve and Lou Pfeiffer
Ultimate Fleet Repair

Hummingbird—\$100

Darin Husaby Agency
Mark and Kim Calhoun
Kate Dwyer
Kirsten and Eric Gregerson
Steve Johnson
Diane Kubal
Park-Port Lioness
Bernie Lortis
David and Donna Madera
Reliable Medical

Steve and Cheryl Moore
Janice Schneider
Mary Thirsten
Joyce and Michael Schmitz
Darlene Scott
Paul and Sharon Severson
Elizabeth and Gregory Severson
Steven and Gail Severson
John and Peggy Thomas



Margaret's Dream

Family and Friends Event

This past May, The Phoenix Residence hosted the first annual Margaret's Dream Family and Friends Social Event at the Southview Country Club in West St. Paul. The event was named in honor of Margaret Ludden, The Phoenix Residence founder who envisioned a bright future for her son John. We would like to continue her legacy and share her passion to new family members.

The evening was for families, guardians, and individuals who are new to The Phoenix Residence to enjoy an evening of friendship, light appetizers, and a brief program from Phoenix staff and other family members whose loved one is currently receiving services. As an organization, we wanted an opportunity to show our appreciation and welcome new families. The evening was a success with over 40 people attending and received great reviews from those who attended. The Phoenix Residence will continue to offer this event to new family members.



Family speaker Deb Malmo speaking about the services her brother Leonard receives at Foss House.



Cheryl Moore, mother of Olivia at Viking House, was one of the family speakers.

Donations

\$5000 and up CBS Construction \$2500-\$4999 John and Shirley Myers Eric and Mary Claire Schultz Geritom Medical, Inc. South Robert Street Business Assoc. \$1000-\$2499 John's Procure Lunds & Byerlys Lynn and Dave Myhr Mary Jo Bailey Carlson Advisors Mary Ann Corbey NFP Tom and Mary Deeney Anchor Bank, NA Cummings Mobility Darlene Scott McKesson Medical Steve and Lou Pfeiffer Hubbard Broadcasting Foundation Betsy Sagnes CBL Flooring	Derrick Banks K&L Building and Remodeling Marion Burkhardt Minnesota Coaches, Inc. \$500-\$999 Ultimate Fleet Repair Canopy Financial Group John Kuhrmeyer Alex Lape New Park Lions Club, Inc. Innovative Office Solutions Wilson Tool International Bud and Shirley Bergquist CSI Testing Ecolab Foundation Jeff Schmitt Karen Olson Kevin Filter and Rosemary Kessler Mary Moran Paul and Sharon Severson \$100-\$499 Dave Comfort Becky Butler Dan Lippert	Handi Medical Twin City Janitorial Supply Mary Thirsten St. Paul Park-Newport Lions Club Christensen Group Duane Harves Pat Burns Pat Casey Patricia and Neil Smith Thomas Cherry Vadnais Heights Lions Club Western National Mutual Insurance Company Alan Berner Knights of Columbus Brown & Brown Business Telephone Products Dakota Electric Association Dorothy and Jane Homme Entira Family Clinic Grant Barrette Katherine Dwyer Ken Ward Kirsten Gregerson Wendy Wilhelmy
--	--	--

Donations

\$100-\$499 (continued)

Linda Sutherland
Michelle Peltier
Park-Port Lioness
Paul Coons
Paul or Ellen Wilson
Roxanne Kasal
Selective Insurance
The Sportsmans Guide
Cody and Julie Benoy
Diane Kubal
Midwest Special Services
Wendy Price
Barbara Husaby
Cheryl & Steve Moore
Larry Quist
Bernie and Buzz Lortis
Bettina and Dennis Hoyer
Carlton Insurance Marketing
D'Ann Becker
Darin Husaby
Donna and David Patrick Madera
Elizabeth and Gregory Severson
Gail and Steven Severson
Gina Aasen

Janice Schneider
Jennifer King-Ellis
Joan Wilhelmy
John and Peggy Thomas
Joyce and Michael Schmitz
Karen Steiner
Keenan Raverty
Kim Johnson-Calhoun
Larry Luck
Lynne and Jim Crist
Mariann Jackson
Marie and Robert Conlin
Mark and Adele Robinson
Mark and Jacquelyn Braun
Mary Vilmur
Mona Strom
OTT, Inc.
Pam Connolly
Randy and Paulene Roering
Reliable Medical
Richard Ivance
Susan Johnson
The Canopy Group
Thomas Bell
Walter and Susanne Bonfe

Up to \$99

Sherry Gray
Michael and Jean Doran
Sandra and William Crom
James and Angela Goodrick
Anna Chamberlain
Bill and Sandy Husaby
Carol Kemp
Cheryl and Lyle Chacka
Dan and Deanna Roering
David Douglas
Dominic and Lindsey Hartjes
Geoff and Kaylene Roering
Ginny Mackenzie
Joanne and Craig Swanson
Janis Gordan Mackie
John and Nancy Orme
Kermit Valleen
Lenora Jones
Matt and Jenna Severson
Michael and Charlotte Montag
Queen Esther Chapter 26
R Douglas Realty
Richard and Catherine Ehrmanntraut
Robert and Marie Murphy

Donations

Up to \$99 (continued)

Robert and Sandy Frenger

Rose Joarnt

Tammy Sampson

Terry and Janet Cavegn

Thomas Madera

Tom Severson

WCMC

Diane Berg

Christopher and Elisabeth
McSherry

Jame and Judith Sturm

Jody Curl

Peg R Ruetten

Patricia and Richard Coan

Evan Charles Decker

Alvin King

Anne and Pierre Lagrandeur

Carroll and Helen Peter

David and Diane Brass

Dori Ann Amsler

Edward and Andrea Chromey

Frances Manderson

Gene and Florance Engelbrecht

Jamie Berner

Jo Ellen Duncanson

Joan and David Sloop

Justin Roering

Pam Kranz

Robert and Sharon Thibault

Rose Hughes

Barbara Novek

Carole Pfaff

Liz McCambridge

Pat and Gary Rudiger

Pat Callinan

Paulette Durose

Tim and Valerie Sailor

Warren and Sharon Sudmeier

Max and Natalie Seim

Patty Turbes-Mohs

*The Phoenix
Residence sincerely
apologies if anyone
was unintentionally
omitted from the
donation list. Again,
thank you for your
generous donations!*

In-Kind Donations

A. Johnson & Sons	Festival Foods	Metro Sales	Stages Theatre Company
Abdallah Chocolates	Fireside Lounge	Mill City Museum	Steve Pfeiffer
Acme Comedy Co.	Gertens Greenhouse and Garden Center	Minnesota Landscape Arboretum	Surly Brewing Company
Alexis Bailly Winery	Grand Casino	Minnesota SEA LIFE	Tamarack Tap Room
Anoka County Parks and Recreation	Grandma's Restaurant Company	Minnesota State Fair	The Cellars Wine & Spirits
B52 Burgers and Brew	Great Lakes Aquarium	Oak Marsh Golf Course	Total Wine & More
Batteries Plus	Great Waters Brewery	Old Log Theater	Vertical Endeavors
Bernie and Buzz Lortis	Guthrie Theater	Ordway Center for	Walker Art Center
Black Bear Resort and Casino	History Theatre	Pam Connolly	Weisman Art Museum
Bluestone Physician Services	House of Comedy	Panera Bread	Wendy Price
Brave New Workshop	Ichiabn Japanese Steak House	Pat Burns	Wild Mountain Ski and Water Park
Breadsmith	Innovative Office	Pat Callinan	Wine & Canvas
Brunswick Zone XL	Izzy's Ice Cream Cafe	Paul and Sharon	Wuollet Bakery
Cafe Latte	Joe and Maddie Mauer	Prairie's Edge Casino	
Cannon River Winery	Klm Finnerud	Punch Pizza	
Carol Olson	Lifetouch, Inc.	Ramsey County	
Chanhassen Dinner Theater	Lisa Brown	Reliable Medical	
Color Me Mine	Lucky's Custom Fishing Rods	Rocco Altobelli	<i>The Phoenix Residence sincerely apologies if anyone was unintentionally omitted from the donation list. Again, thank you for your generous donations!</i>
ComedySportz	Mama's Pizza	Ruttger's Bay Lake	
Comfort Suites of Canal Park	Mancini's Char House	SevenClans Casino	
Commercial Steam Clean	Mary Thirsten	St. Paul Chamber	
Darlene Scott	Massage Envy	St. Paul Harley-Davidson	
Downtowner Car Wash	McGarry's Pub	St. Paul Saints Baseball	

Memorials and Honorariums

In Honor of Wendy Severson

Randy and Paulene Roering

In Honor of Danny Smith

Paul and Ellen Wilson

In Memory of Dale Bergquist

Warren and Sharon Sudmeier

Ginny Mackenzie

Pat Callinan

Bud and Shirley Bergquist

In Memory of Ray W. Chamberlain

Anna Chamberlain

In Memory of Robert Dunnigan

John and Nancy Orme

Jame and Judith Sturm

Patricia and Richard Coan

Mary Thirsten

In Memory of Daniel Ehlenz

D'Ann Becker

In Memory of Carolyn Fournelle

Max and Natalie Seim

Pat and Gary Rudiger

Thomas Bell

Mark and Adele Robinson

In Memory of Stephan Lape

Frances Manderson

Mary Ann Corbey

Edward and Andrea Chromey

Anne and Pierre Lagrandeur

David and Diane Brass

Robert and Sharon Thibault

Mary Thirsten

Larry Luck

Mariann Jackson

Robert and Marie Murphy

In Memory of Antoinette Lippert

Bettina and Dennis Hoyer

Kevin Filter and Rosemary Kessler

Linda Sutherland

Marie and Robert Conlin

Paulette Durose

Patty Turbes-Mohs

Dan Lippert

In Memory of Eric Lofgren

Joan and David Sloop

In Memory of Jimmy Maun

Janis Gordan Mackie

In Memory of Sarah Peter

Carroll and Helen Peter

In Memory of Mary Purtell

James and Angela Goodrick

In Memory of Kristin Olin Schifsky

Diane Berg

Michael and Charlotte Montag

Michael and Jean Doran

Richard and Catherine Ehrmanntraut

Barbara Husaby

Wendy Price

Walter and Susanne Bonfe

Christopher and Elisabeth McSherry

Susan Johnson

Joan Wilhelmy

Wendy Wilhelmy

Mary Thirsten

In Memory of Mark Wagner

Becky Butler

Financials

STATEMENT OF FINANCIAL POSTION

Assets	2015	2014
Cash	\$741,428	\$1,029,157
Accounts Receivable	\$869,612	\$889,483
Property & Equipment	\$6,776,152	\$6,629,344
Other	\$41,750	\$63,633
Total Assets	\$8,428,942	\$8,611,617

Liabilities and Net Assets

Current Liabilities	\$779,425	\$958,107
Long-Term Debt	\$730,313	\$1,439,544
Total Liabilities	\$1,509,738	\$2,397,651

Net Assets

Unrestricted	\$6,645,219	\$5,995,591
Temporarily Restricted	\$273,985	\$218,375
Total Liabilities and Net Assets	\$8,428,942	\$8,611,617

STATEMENT OF ACTIVITIES

Revenue & Support	2015	2014
Program Services	\$10,495,692	\$10,173,763
Donations & Special Events	\$276,189	\$105,209
Interest & Other	\$7,461	\$16,531
Total Revenue	\$10,779,342	\$10,295,503

Expense

Program Services	\$8,906,637	\$8,640,104
Administrative Expense	\$1,143,384	\$1,072,738
Fundraising	\$24,083	\$27,797
Total Expenses	\$10,074,104	\$9,740,639

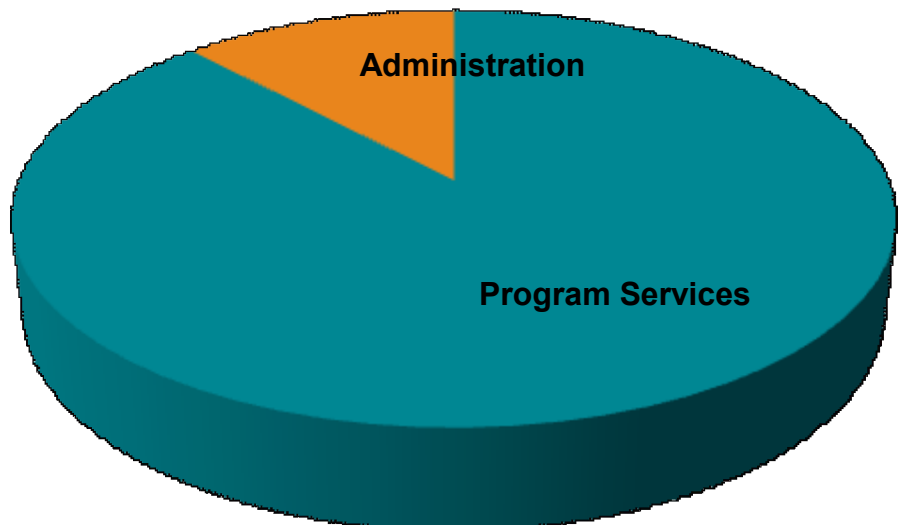
Change in Net Assets

	\$705,238	\$554,864
--	-----------	-----------

2015 Expenses

88% Program Services

12% Administration



Board of Directors

<i>Steve Pfeiffer</i> <i>Chairman</i>	<i>Derrick Banks</i> <i>Vice-Chairman</i>
<i>Dr. Richard Ivance</i> <i>Past Chairman</i>	<i>Jean Schmidt</i> <i>Secretary</i>
<i>Kirsten Gregerson</i> <i>Treasurer</i>	<i>Paul Coons</i> <i>Director</i>
<i>Mary Jo Bailey</i> <i>Director</i>	<i>Jennifer Buchanan</i> <i>Directors</i>
<i>Edward Gutzmann</i> <i>Director</i>	<i>Darlene Scott</i> <i>President/CEO</i>
<i>Jeff Bauer</i> <i>Director</i>	<i>Eric Schultz</i> <i>Director</i>
<i>Jim Hughes</i> <i>Director</i>	

Contact Information

The Phoenix Residence, Inc.

330 Marie Ave East

West St. Paul, MN 55118

651-227-7655

www.PhoenixResidence.org

Follow us on Facebook and Twitter!!